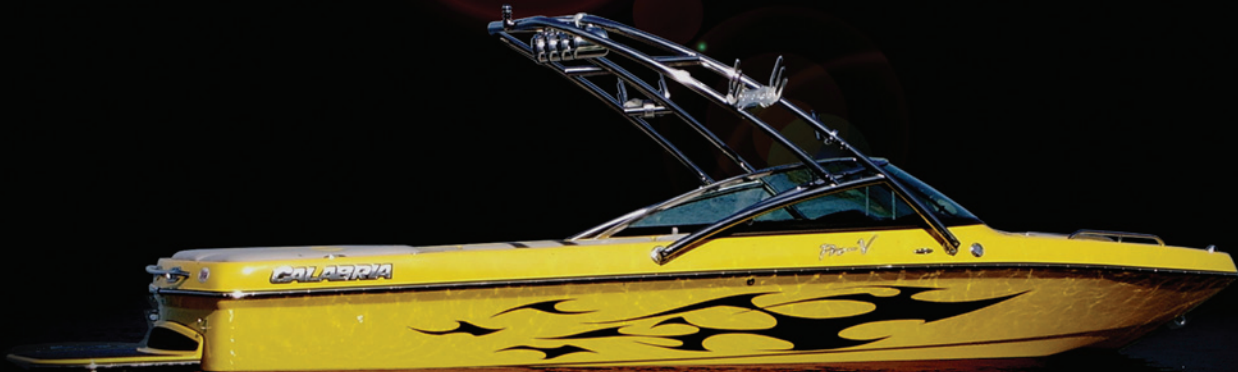


CALABRIA BOATS





Every boat is ergonomically designed with comfort and safety in mind.





*All of us here at Calabria
are very proud of our boats,*

You will be, too!

FORM AND FUNCTION.

One cannot be achieved at the expense of another. Or so is our belief with each and every boat we build. What good are quality materials and craftsmanship if the innovation and design that follows means nothing? Or what good is a radically technological boat, if these innovations serve no purpose, or worse, hinder performance? It's questions like these that push us at Calabria to master the elements and achieve excellence by balancing the two, while setting the standard in each.



PERFORMANCE

Designing at Calabria starts from the outside in, so once it's decided whom the boat is for, the appropriate hull is then created. For wakeboard boats, huge V-hulls are used in the front to cut through the water like butter, and continue into the rear for large wakes. While the hulls on our ski boats taper off in the rear, to create virtually no wake. And if a mix of the two is desired, as in our sport boats, the hull depth falls somewhere in-between.

After this, every piece of the hull is chemically bonded and coated with a 4mm layer of CoreMat™, to eliminate vibration while maximizing strength. And to top it all off, a custom in-mold sprayed gelcoat is used in place of decals. Guaranteeing your boat will look as good as it performs.

ON THE INSIDE

Once inside, you'll notice the attention to detail doesn't stop.

All interior and exterior hardware is made of aircraft grade 6061 billet aluminum or stainless steel, starting with 5" servo-driven BorgWarner gauges with Perfect Pass™ Cruise Control. Or upgrade to the optional Mercury Smart Craft™ Information Management System which encompasses Smart Tow™ Cruise Control System, speedometer, tachometer, air/water temperature readings, GPS and all engine monitoring systems for state-of-the-art navigation.

If that isn't enough, the upholstery is created by using a 36 oz Syntek™ vinyl with a treated topcoat laquered with TAS-1 Advanced Vinyl Protection that ensures great looks as well as durability. And what would a boat be without abundant storage area to stow all your gear? In every Calabria these areas are fully upholstered and carpeted so all the abuse your equipment sees will be on the water, not in here.

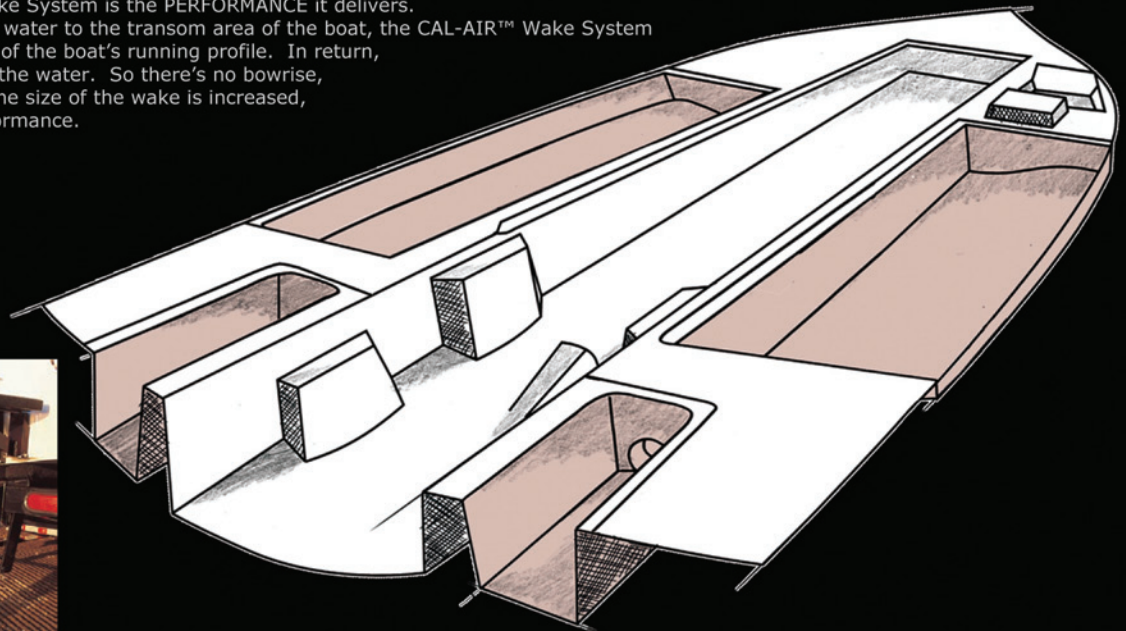
THE CAL-AIR™ WAKE SYSTEM

SIMPLICITY, SPEED & PERFORMANCE, all working in perfect harmony together to create the world's most ingenious ballast system that has been awarded a patent by the U.S. Patent Office (U.S. Patent number: 6,234,099).

A SIMPLE ballast system by design, the CAL-AIR™ Wake System doesn't use pumps or hoses or take up any extra space when in use. Instead, water storage areas are built right into the boat's liner system, located in the hull beneath the waterline. To fill the system, simply flip a switch and let gravity do all the work. Two 3" valves open and the tanks are flooded. To empty, give it some gas and flip the switch again. The valves open and gravity will suck the water right out the back. It doesn't get any easier than that.

Even more amazing is the SPEED in which it all happens. A mere 45 seconds to fill, and 15 to empty. That's 700 pounds of water in and out of the system in less time than it takes to figure out who's up next. Have we mentioned the word 'ingenious' yet?

The best element of the CAL-AIR™ Wake System is the PERFORMANCE it delivers. While other ballast systems isolate the water to the transom area of the boat, the CAL-AIR™ Wake System evenly distributes the water to 2/3rd's of the boat's running profile. In return, the boat sits deeper and more level in the water. So there's no bowrise, and the prop sits flush in the water. The size of the wake is increased, without compromising power and performance.





PRO-V II

Calabria introduced the Pro-V II, a wakeboarding machine that screams for attention. Not only is it one of the most spacious 20-footers around — something any rider and posse can appreciate — it also has the stylish attitude to match. The stainless-steel tower, carbon-fiber like upholstery, and new dash design catches your eye right away, and the wakeboarding-oriented performance will definitely keep your attention.

The Pro-V-II's wake performance mirrors that of its older brother, the Pro-V, offering rampy wakes with excellent shape. Beginners through intermediates will certainly get their fix by using the patented integrated ballast system to boost wake size, and advanced riders can go for optimal wake size just by adding more ballast.

Innovative ideas like the forward placement of the gas tank help the Pro-V II knife through the water with an efficient running attitude. With the MerCruiser Black Scorpion 330-horsepower engine, you will be impressed by the hole shot, and this boat will hold its own through aggressive turns!

It will be easy for you to stretch your legs on this exceptionally spacious 20-footer, and the overall fit and finish of the Pro-V II makes for a comfortable, stylish, and exciting ride.

Specifications

- Length w/ Platform: 21'6"
- Length of Platform: 30"
- Beam: 98"
- Length with Trailer: 24'3"
- Width with Trailer: 102"
- Weight: 3300 lbs.
- Fuel Capacity: 55 GAL
- Draft: 23"
- Seating: 11
- Bow Style: Open
- Standard Engine: MerCruiser
Black Scorpion-330 hp





PRO-V

Huge, professionally chiseled wakes that don't disintegrate when you charge at them, a V-Drive wakeboard boat that "...turns on a dime" with plenty of space for the whole crew and their gear; not in any boat you've ever heard of, right? Wrong!

The **Cal-Air Pro-V™** represents the epitome of engineering excellence, forethought and design. This is the world's most technologically advanced wakeboarding machine. The standard **CAL-AIR™ Wake System** fills in 45 seconds and empties in 15 seconds adding 700 lbs. of water weight, **NO PUMPS!** The standard **CAL-AIR™** tower collapses for simple, easy storage and due to the unique transom area Delta Pad, there is absolutely no bow-rise resulting in effortless planing, no high-chairs needed! To top it all off the optional, highly-custom **Swoosh and Checkers** or the **Ellipse** graphic designs are all sprayed in mold by Calabria artisans to a minimum tolerance of 25 mils; simple gelcoat work covered by undemanding stickers is clearly unacceptable.



Specifications

- Length w/ Platform: 23'6"
- Length of Platform: 30"
- Beam: 102"
- Length with Trailer: 24'3"
- Width with Trailer: 102"
- Weight: 3500 lbs.
- Fuel Capacity: 55 GAL
- Draft: 23"
- Seating: 15
- Bow Style: Open
- Standard Engine: MercCruiser
Black Scorpion-330 hp





TEAM-V

One of the best just got better. This year, Calabria Boats has added a Team Edition Pro-V to their line-up. Still boasting oversized playpen seating, storage, and the fastest filling and emptying ballast system available, the Team-V is a well trimmed version of its predecessors.

First, Calabria has taken the best functioning ballast system in the Towboat market the **CAL-AIR™ Wake System**, and upsized the ballast to over 1000 lbs. Filling in just over one minute, your ballast will be full by the time you figure out who is riding next. Calabria features an oversized, wrap around seat configuration, which seats an NMMA approved 15-person capacity. Accented with custom interior accents and graphics, the Team-V is sure to wrap you and several of your friends and family in style and comfort. With over 55 cubic feet of storage, having the ability to store all of your gear away, make the Team-V easy to load riders and passengers with ease.

Topping off the Team-V is a 2 ¼" polished stainless steel wakeboard tower. This unique tower performs better than an aluminum, which bends, and puts stress on the fiberglass where the tower is mounted. Boston Acoustics has teamed up with Calabria to feature a mind numbing, 11 speaker audio system. The system is accented with (6) 6x9 cockpit speakers, (4) polished 6 ½" tower speaker, a massive 5 channel amplifier, and a heart pounding 10" subwoofer.

Calabria doesn't stop there. With features like Perfect Pass Digital Wakeboard Pro, an automated dual ram wake shaping system, dual port heater, and a flip up bolster driver seat, the Team-V leaves nothing to be desired by riders and passengers alike.

Specifications

- Length w/ Platform: 23'6"
- Length of Platform: 30"
- Beam: 102"
- Length with Trailer: 24'3"
- Width with Trailer: 102"
- Weight: 3500 lbs.
- Fuel Capacity: 55 GAL
- Draft: 23"
- Seating: 15
- Bow Style: Open
- Standard Engine: MercCruiser
Black Scorpion-330 hp





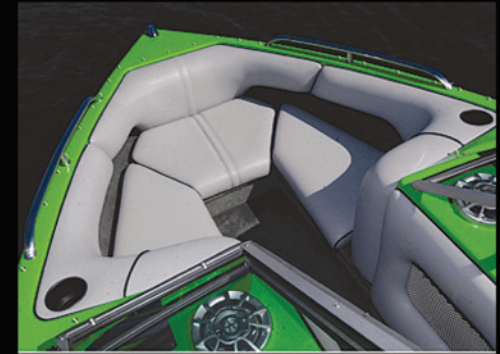
CAL-AIR

The Cal-Air is a high-end multi-purpose boat with a split personality. It produces both a great slalom wake and awesome pro-level wakes for the family also looking to wakeboarding. This boat is plush, luxurious and loaded with features, the best of which is built into the floor. The Cal-Air uses Calabria's patented integrated ballast system. With a push of a switch the release valves open and the ballast tanks immediately flood with 700 pounds of water—in about 45 seconds. It empties in a third of that time just by driving with the valves open. This means the boat goes from slalom to wakeboarding and back much quicker than any other boat on the market. Another invisible feature is that the gas tank is located forward, where other manufacturers put unusable floor storage lockers guaranteed to soak anything put in them. This assists in giving the Cal-Air incredible storage room in the rear trunk.

More visible comfort features include standard removable jump seats, a recessed driver's foot well, ergonomically designed drivers helm with fully appointed dash and a polished stainless steel tower. It's as comfortable to lounge in as it is to ride behind.

Specifications

- Length w/ Platform: 21'6"
- Length of Platform: 30"
- Beam: 87"
- Length with Trailer: 24'3"
- Width with Trailer: 102"
- Weight: 3200 lbs.
- Fuel Capacity: 29 GAL
- Draft: 19"
- Seating: 10
- Bow Style: Open
- Standard Engine: MercCruiser
Black Scorpion-330 hp



MERCURY

MerCruiser

The Scorpion Stings. Everything Else Bites.

The Black Scorpion engines are here with a vengeance. Designed and built with one purpose: to deliver the most effective pulling power with the right amount of torque right when you need it. With the Tunnel Ram intake manifold, a 90-mm throttle body and billet steel high-lift camshaft, no other tow sports engine can deliver the sting of a Scorpion.

Scorpions are not all brawn. Black Scorpion is also wicked smart. Fully dialed in with SmartCraft® technology to give you total control at the helm and over the water. The ECM 555 Controlled Area Network makes the entire vessel an intelligent system. The SmartCraft® system serves as an I/O hub for digital engine and environmental information and enables features like Engine Guardian to monitoring and protect your valuable investment.

Our Calabria factory technicians have been rigorously trained and certified by Mercury's Marine 29 point Propulsion-Installation Certification Program. As a result, your engine is installed at the highest quality. More so, Calabria's Certification gives you a standard 2-year limited engine warranty on every boat. Now all you have to do is pick your poison.

Black Scorpion 5.7
330 hp



MX 6.2 Black Scorpion 340 hp

FEATURES

RELIABILITY

- ▷ ECM 555 fuel and ignition system, along with platinum-tipped spark plugs, ensures reliable starts and outstanding performance, year after year
- ▷ Dry-joint exhaust eliminates the chance for water to enter engine through leaky gaskets
- ▷ Water-separating fuel filter helps protect fuel system and engine against damage
- ▷ Extra high alternator output at idle to keep batteries going with large amps and water pumps
- ▷ Proven General Motors® cast-iron block V-8 power for years of reliable operation
- ▷ Ceramic-coated exhaust elbows better resist high temperature and corrosion
- ▷ Brass seawater pump housing improves life and better resists damage from running dry
- ▷ No fuel return lines for added safety
- ▷ An all-iron exhaust system will not corrode, leak or melt like aluminum exhaust can

PERFORMANCE

- ▷ Nothing beats the power delivery of a Tunnel Ram
- ▷ 90-mm throttle body for instant throttle response
- ▷ HVS ignition with knock control maximizes power and protects against low-quality fuels
- ▷ Low-restriction anodized flame arrester for added horsepower and torque
- ▷ A variety of available high-quality hydraulic transmissions allow boat manufacturers to precisely match hull characteristics and boat weight to optimize performance
- ▷ Custom hot spark calibration for maximum pulling torque

EASY OWNERSHIP

- ▷ Three-year/300-hour maintenance interval on many periodic service items save time and money
- ▷ Color-coded service points make checking fluid levels simple and straightforward
- ▷ Operates on easy-to-find, less-expensive 87-octane fuel
- ▷ No tools required to drain water from engine with blue drain plugs
- ▷ Special ball joint throttle and shift linkage for easy maintenance and custom adjustments made simple
- ▷ Optional remote oil filter and oil drain hose, makes V-drive oil changes easier than a car
- ▷ Optional air-actuated water drain, drains lake water from the block in seconds

TECHNOLOGY

- ▷ Multi-port fuel injection provides easy starts, cold or hot, and automatically adjusts for changes in temperature, weather or altitude for terrific performance in any environment
- ▷ Helm-mounted Audio Warning System works with Engine Guardian to monitor and protect against engine or transmission damage if monitored temperatures or pressures vary from normal range
- ▷ Large 65-amp alternator provides plenty of power for popular onboard electronics, even at low rpm
- ▷ MPI engines are designed to display engine information on your choice of analog or SmartCraft® digitally driven gauges and displays



OPTIONS

Extraordinary Choices for Extraordinary Boats

From our exclusive partnership with Boston Acoustics to our polished billet boat and tower accessories, we have everything you may want or need to personalize your Calabria.



Sony fully expandable receiver



6x9 Cockpit Speakers



10" Subwoofer



6 1/2" Tower Speaker



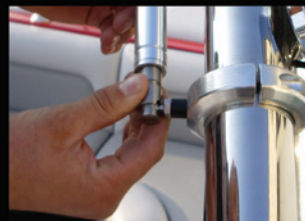
5 Channel Amplifier



Polished Billet 6 1/2" Tower Speaker Enclosures



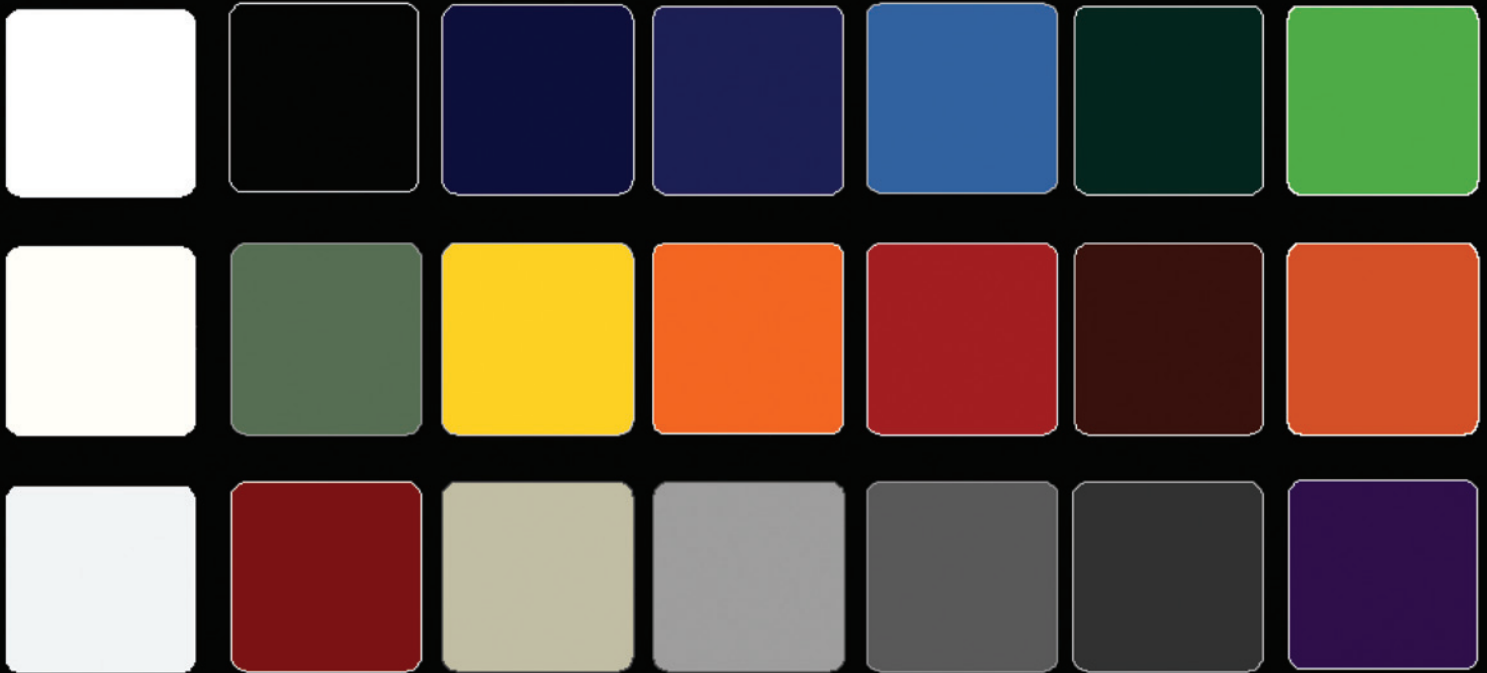
Calabria Board racks, just one of the full range of custom billet products for your boat.



Calabria's exclusive quick disconnect Bimini top. No screws or bolts to fumble with or drop in the water

TURN HEADS

Pick a color, any color. You can't go wrong. Every one is derived from a high density CCP gelcoats, designed to last a lifetime. So just choose the color that grabs your eye, because they're all guaranteed to turn heads



We also offer a wide selection of metallic and metal flake accents.

EXPRESS YOURSELF

Other companies claim to be custom boat builders, but we truly are.

Choose one of our exclusive in-mold gelcoat designs or talk to us about customizing our designs to express your own individuality, something not available through other manufacturer!



FEATURES

Propulsion System

2 Year Limited MerCruiser Engine Warranty

1:1 71C Velvet Drive Transmission

1.45 to 1 gear reduction Walter V-Drive

3 Year Limited MerCruiser Engine Corrosion Warranty

4 Blade OJ 13 x 17.5 Propeller

5" BorgWarner Speedometer with Air Temp, Water Temp, Depth Gauge, Hour Meter, & Clock

5" BorgWarner Fuel, Oil Pressure, Temp and Volt Gauge

Computerized Engine Monitoring System

Engine Oil Drain

Heavy-Duty Interstate Marine Battery (Factory Installed)

Low Profile Silent Ride Exhaust System

MerCruiser 350 Scorpion MPI 330hp

Teleflex(tm) Competition Throttle Control

Water Separating Fuel Filter

Full Navigational Exterior Lighting

Gull-Wing, Aft Facing Observers Seat with underside Lighted Storage

Interior Courtesy Lighting

Syntec with Prefixx Marine Upholstery

Pull-Up Cleats

Stainless Steel Bow and Transom Grab-Rails

Composite Transom Saving Boarding Platform (Removable, Rattle-Free, and Triple-Mounted)

TeleFlex Tilt Helm and Steering Column

Water-resistant Glove Box

Windshield Mounted Mirror

Rear Drain with Threaded Plug

Construction and Components

4 Color Premium CCP Gelcoat 25 millimeter Gelcoat (Tolerance +/- .005)

100 Composite Hull, Deck, and Patented Multidirectional HLS Liner (Stringer and Floor System)

100Composite Floor Boards

All Hand-laid Fiberglass Construction

Cal-Air Tower

Circuit Breakers

Fully Integrated Gelcoat Striping

High Density PVC Rubrail with Vinyl Insert

Heavy-Duty Interstate Marine Battery (Factory Installed)

Heavy-weight 40oz Syntec Marine Carpeting

In-Water Quality Guarantee Lake Testing

Lifetime Transferable Warranty on Hull and Structural Components

Magnesium Bronze Rudder Box, w/ O-rings and Grease Fittings

3 Through-Bolted Magnesium Bronze Skegs

Magnesium Bronze Strut, 6 through-bolts and Dual Bearings

Motor Mounts Machine Tapped into 1/2" Steel Mounting Plates

Taylor Made Curved Safety-Glass Windshield

Cal Air Wake System (U.S. Pat. No. 6,234,099)

Pylon Bracket Machine Bolted into 3/8" Steel Mounting Plates

RotoCast Polyethylene In-Floor 65 Gallon Fuel Cell

Stringer Enclosed 3/8" and 1/2" Steel Mounting Plates

Stainless Steel Bow and Stern Lifting Eyes

Stainless Steel Stern Mounted Tow-Eye

Stainless Steel Upholstery Staples

Steel Reinforced Molds

Superior Strength 1 1/8" Stainless Steel Nautilloy 17 Prop Shaft

TeleFlex Rack and Pinion Steering

TeleFlex Tilt Helm and Steering Column

Wire Harness with color-coded wires (Meets ABYC Standards)

Interior/Exterior Luxury and Convenience

4- 12 volt DC Power Outlet's (One in each Trunk)

3 Piece Easy Access Sun Pad with Lockable Storage

Stainless Steel Drink Holders

Anodized Aluminum Swivel Head Ski Pylon

Authentic Italian Racing Wheel Spokes by Dino

Built-in Insulated In-Floor Ice Chest with Drain

Drivers Seat with RotoCast Frame, Adjustable Fore, Aft and Swivel

Dual Rear Lockable and Lighted Storage Trunks, 22.5 Cubic Feet (per)

Ergonomic Drivers Cockpit with Integrated/Recessed Foot-Well

Forward Facing Bow Seats with Storage

Safety Features

Battery Isolator Switch

Automatic / Manual Bilge Pump

Bilge Blower System

Closed-Cell Flotation

Engine Warning Alarms

Stainless-Steel 105 db Horn

Inland Illumination

V-Drive Transmission Warning Light

Optional Heads-Up Speed and Tachometer

All Boats are NMMA Certified using ABYC Standards

PARTNERS

Calabria works with many marine industry organizations and experts to offer you the safest and highest quality boats available.





The Official Calabria Dealer - Few are Chosen

Calabria Boats has set the standard for performance, quality, and durability. Your official Calabria dealer reflects this incomparable Calabria reputation for professionalism and integrity, providing you with unrivaled attention. For this reason, you can purchase your Calabria only at an official Calabria dealer.

Selecting the Right Model

Your official Calabria dealer's staff is specially trained to help you choose the appropriate boat from our array of models. Whatever your particular boating needs, there is a Calabria model right for you.

Calabria Authorized Apparel and Accessories

Your official Calabria dealer is authorized to offer genuine Calabria apparel and accessories for you and your boat. Your dealer will provide expert guidance in choosing all of your Calabria accessories. You may also purchase official Calabria apparel and accessories via our website at <http://www.calabriaboats.com>

A Valid Calabria Warranty

Your official Calabria dealer is authorized to provide you with a transferable, lifetime warranty. This uncompromising warranty is backed by the renowned Calabria service network. So when you're ready to purchase your Calabria, remember that an official Calabria dealer is your best source. It is where you can be assured that your lifelong investment in a Calabria will be protected.